

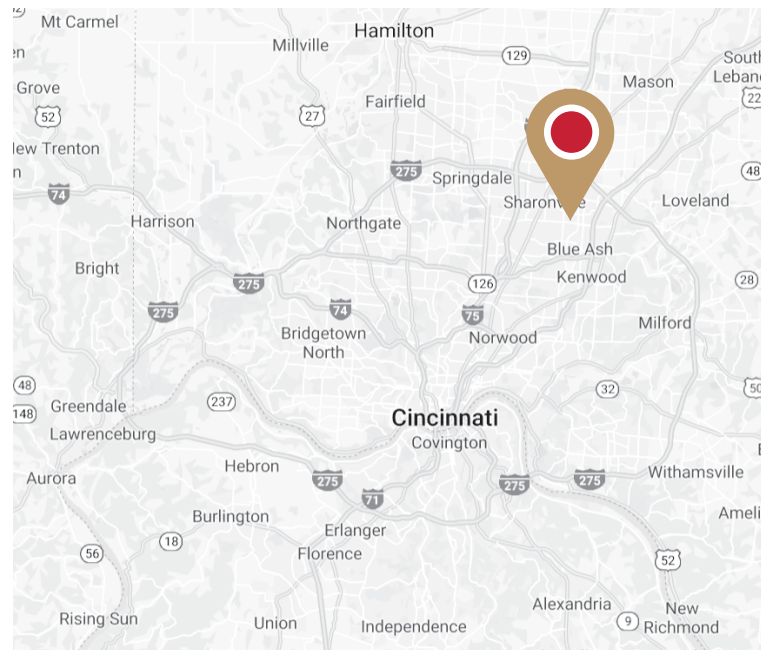
SUBLEASE

4350 Glendale Milford Road, Suite 110 | Blue Ash, OH 45242



Property Features

- 4,307 SF on first floor
- Lease Expiration: December 31, 2023
- Sublease rate: \$16.40
- Available Immediately
- Monument signage available
- Lobby exposure
- Ample Free Parking
- Located across the street from the new Summit Park
- Recently upgraded common areas
- Two-story atrium with skylights
- Furniture available



Brad Ruther, SIOR

President, Principal

☎ (513) 722-6552
✉ bruther@vcre.us
🌐 www.vcre.us

VCRE VETERANS
COMMERCIAL
REAL ESTATE

Chris Carmen

President

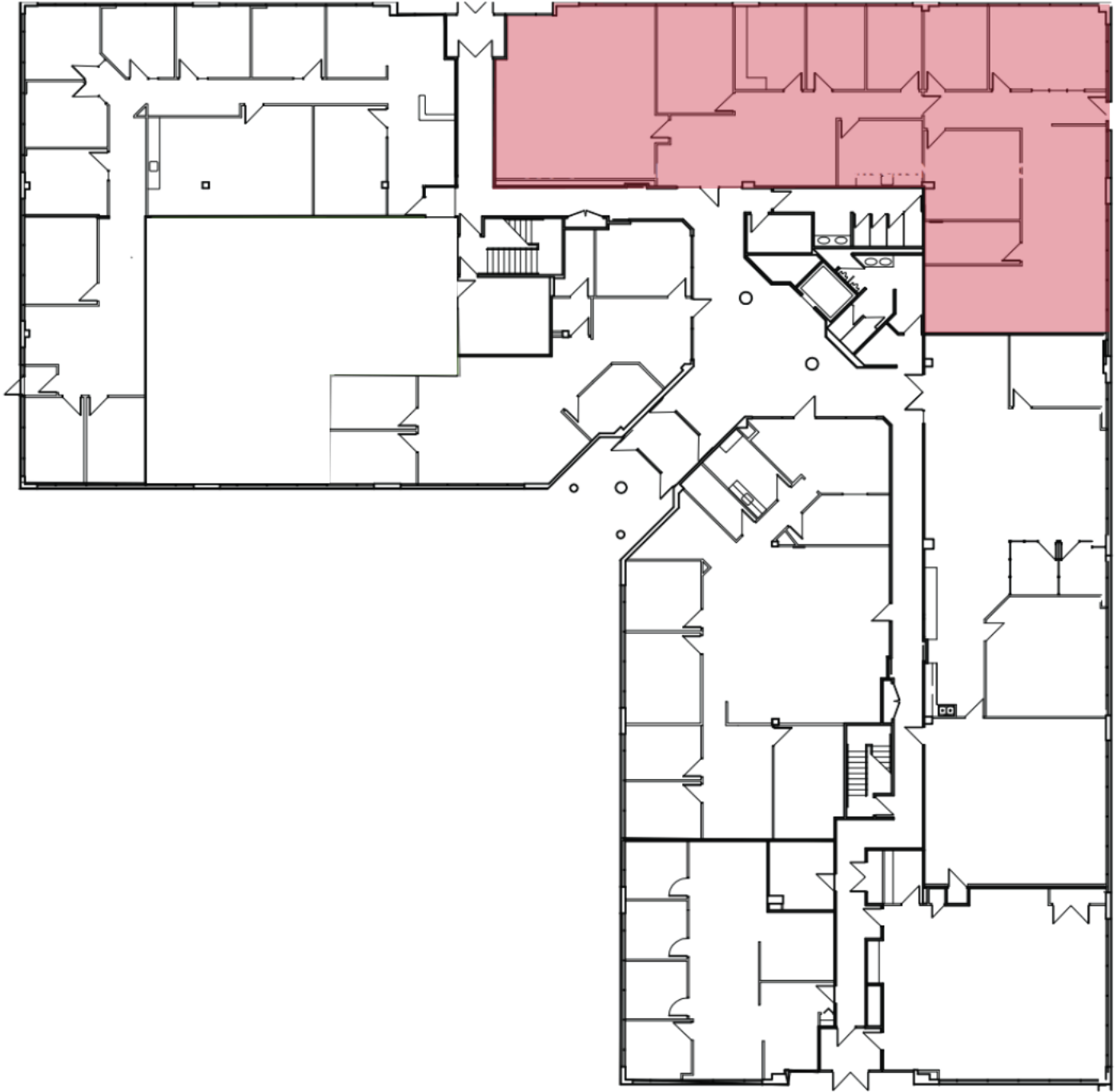
☎ 317.848.0900
✉ cuc@carmenrealestate.com
🌐 www.carmenrealestate.com

CARMEN THE
TENANT
ADVISOR

SUBLEASE

4350 Glendale Milford Road, Suite 110 | Blue Ash, OH 45242

Floor Plan



Brad Ruther, SIOR

President, Principal

☎ (513)722-6552
✉ bruther@vcre.us
🌐 www.vcre.us

VCRE VETERANS
COMMERCIAL
REAL ESTATE

Chris Carmen

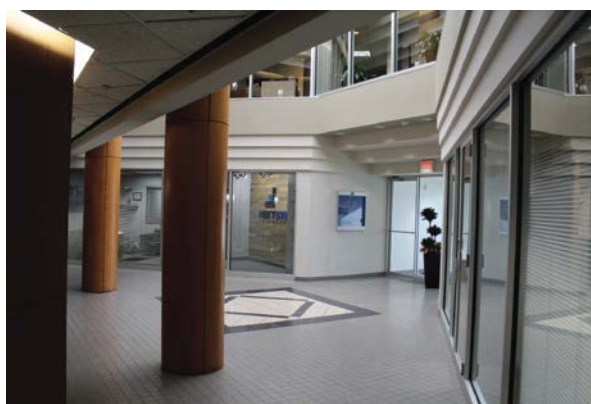
President

☎ 317.848.0900
✉ cuc@carmenrealestate.com
🌐 www.carmenrealestate.com

CARMEN THE
TENANT
ADVISOR

SUBLEASE

4350 Glendale Milford Road, Suite 110 | Blue Ash, OH 45242



Brad Ruther, SIOR

President, Principal

(513)722-6552
bruther@vcre.us
www.vcre.us



VETERANS
COMMERCIAL
REAL ESTATE

Chris Carmen

President

317.848.0900
cuc@carmenrealestate.com
www.carmenrealestate.com

CARMEN THE
TENANT
ADVISOR

SUBLEASE

4350 Glendale Milford Road, Suite 110 | Blue Ash, OH 45242



Brad Ruther, SIOR
President, Principal

(513) 722-6552
bruther@vcre.us
www.vcre.us

VCRE VETERANS
COMMERCIAL
REAL ESTATE

Chris Carmen
President

317.848.0900
cuc@carmenrealestate.com
www.carmenrealestate.com

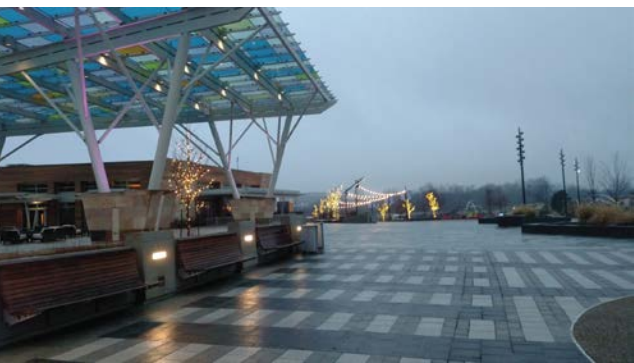
CARMEN THE
TENANT
ADVISOR

SUBLEASE

4350 Glendale Milford Road, Suite 110 | Blue Ash, OH 45242



Blue Ash Business Place is located across from Blue Ash Summit Park, a 130-acre regional park in the heart of Blue Ash where visitors will enjoy interactive programming, unique learning opportunities and year-round experiences in one of the region's most beautiful settings. This park is full of fun for the young and young at heart with the following activities and areas: Great Lawn, pergolas, dog park, walking trails, glass canopy, nature playscape and newly added playground. These dining options are featured nearby: Brown Dog Cafe, Nanny Belle's, Tahona Kitchen + Bar, and Senate.



Brad Ruther, SIOR

President, Principal

☎ (513) 722-6552
✉ bruther@vcre.us
🌐 www.vcre.us

VCRE VETERANS
COMMERCIAL
REAL ESTATE

Chris Carmen

President

☎ 317.848.0900
✉ cuc@carmenrealestate.com
🌐 www.carmenrealestate.com

CARMEN THE
TENANT
ADVISOR